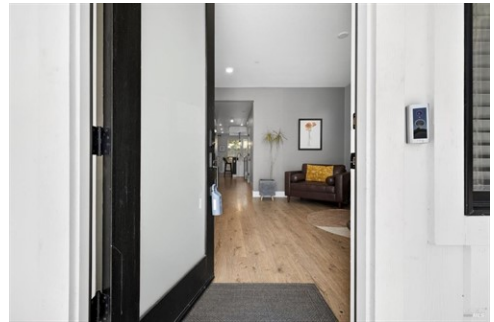




\$ 939,500



2217 Versaro Dr, Santa Rosa, CA 95403

- » Beds: 4 | Baths: 3 Full, 1 Half
- » MLS #: 326044217
- » Single Family | 2,429 ft² | Lot: 3,720 ft²
- » More Info: [2217VersaroDr.IsForSale.com](https://www.2217VersaroDr.IsForSale.com)



Carole McMahon
 (707) 328-1720 (Mobile)
carolejmcmahon@comcast.net



RE/MAX Marketplace
 8220 Old Redwood Hwy
 Cotati, CA 94931

Welcome to this beautifully designed two-story home in the sought-after Kerry Ranch community. Built in 2022, this newer construction residence offers modern style, quality finishes, and exceptional flexibility with an attached ADU all with no HOA and no Mello-Roos. This light-filled home features 3 bedrooms, 2.5 bathrooms, and approximately 1,886 sq ft of thoughtfully designed living space, plus an attached 568 sq ft ADU ideal for guests, extended family, rental income, or a private home office. Inside, you'll find a crisp, contemporary aesthetic with elegant finishes throughout, including engineered plank flooring, quartz countertops, and an open-concept layout designed for modern living. Large windows create a bright and airy atmosphere, while the stylish kitchen and living areas offer both comfort and sophistication. Energy-efficient upgrades include paid solar with battery backup and an A/C heat pump system for year-round comfort and lower utility costs. Step outside to fully landscaped, low-maintenance grounds featuring premium turf and clean, modern curb appeal perfect for easy California living. A rare opportunity to own a stylish newer home with an attached ADU in desirable Kerry Ranch.

